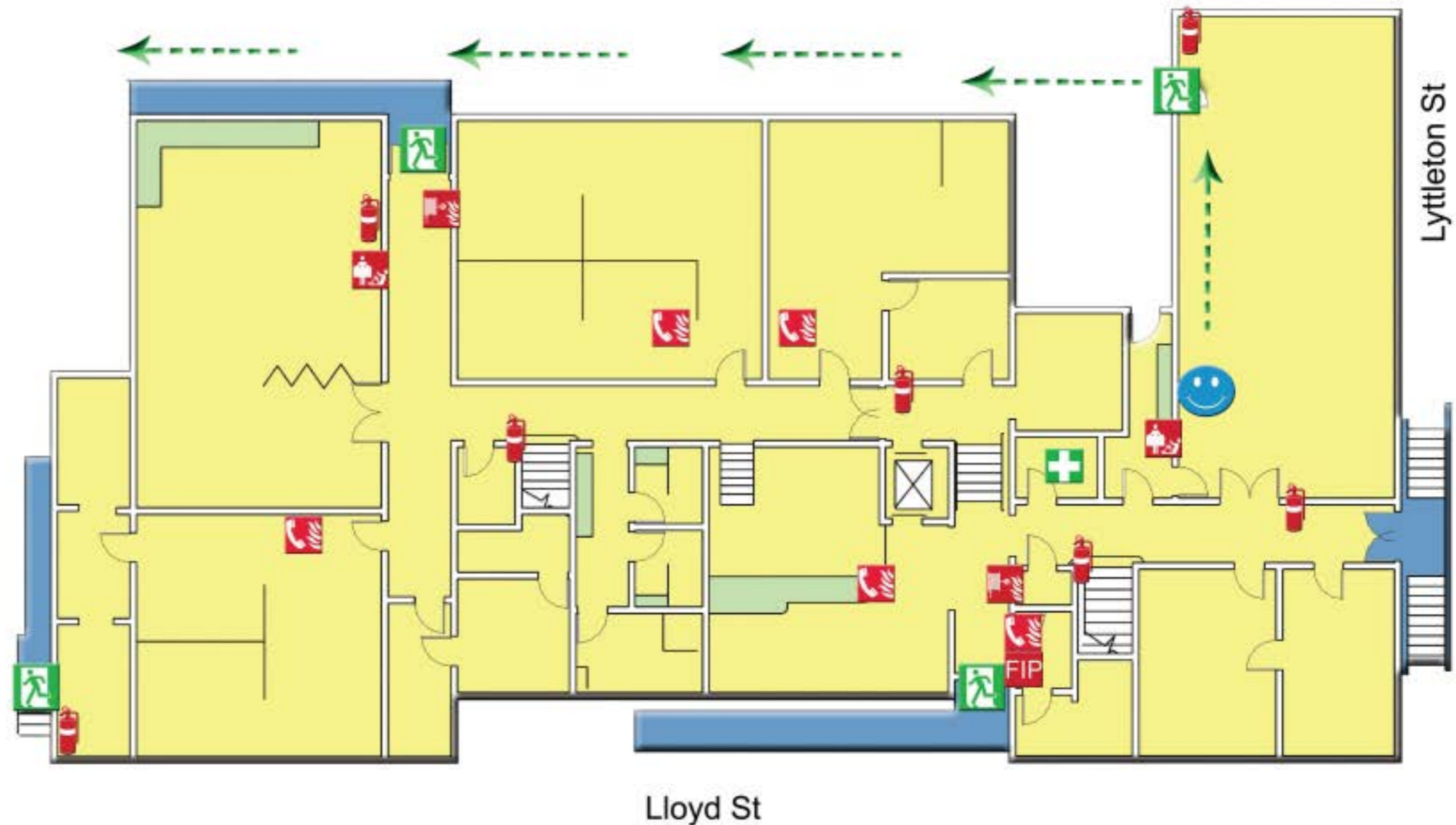


EVACUATION DIAGRAM

ASSEMBLY AREA



Mount Alexander Shire Council Civic Centre 27 Lyttleton Street, Castlemaine Ground Floor



IN CASE OF FIRE

- R** **RESCUE** PEOPLE FROM IMMEDIATE DANGER.
- A** **ALERT** OTHER OCCUPANTS.
- C** **CONTAIN** CLOSE WINDOWS AND DOORS.
- E** **EXTINGUISH** IF TRAINED

LEGEND



ISSUE DATE: JULY 2013 VERSION: 1.0 VALIDATION DATE: JULY 2016